

® **MECCO**
MACHINES



Technical Features
MEC-70x340x600 *BASIC*





MEC-70x340x600 *BASIC*

Technical features

EXPERIENCE AND KNOW-HOW

We have more than 30 years of experience in the field of manufacturing and developing industrial machinery

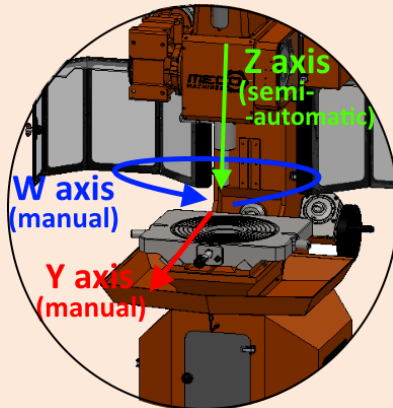
INTERNATIONAL PRESTIGE

We have a large international presence with customers in more than 15 countries around the world.



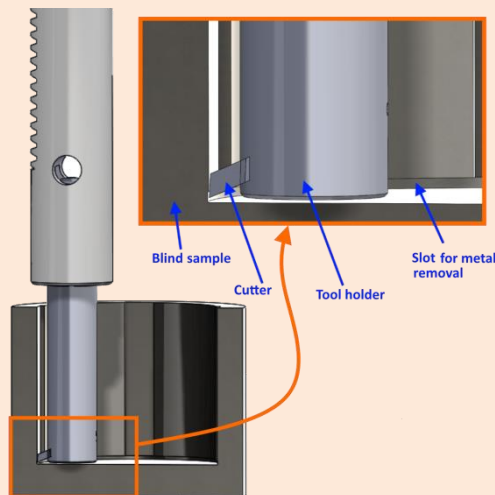
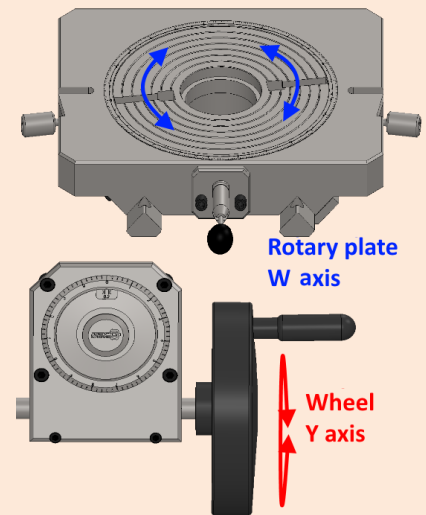
I+D

Innovation and development are one of the main assets that we have in MECO to remain at the forefront of a highly competitive and changing as the sector of the machine tool environment.



- ✓ **MANUAL CONTROL OF MOVEMENT.** The operator transmits the movement of the axis through a small steering wheel while progress is monitored with a calibrated "nonius". Or W-axis index plate also has a nonius for the operator to perform multiple keyways rotating said plate to the required degree.

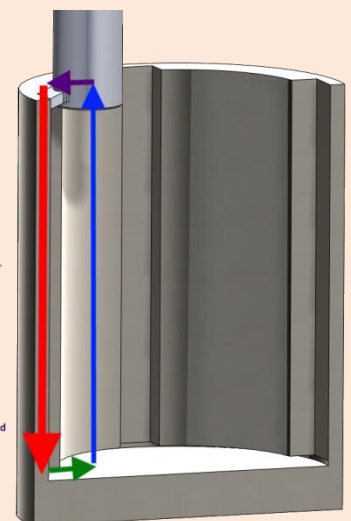
- ✓ **1 AXIS SEMI-AUTOMATIC AND 2 MANUAL.** The Z axis of this particular model is semi - automatic. Reciprocates (up and down) continuously. The route of this axis can define an upper and lower limit switch system. The movement of W and Y axis is manual, that is, the operator is responsible for turning the indexing table control the steering wheel to give depth to the slot.



- ✓ **BLIND SAMPLES.** Properly regulating the limit switches can enter the tool in blind parts and machining grooves or keyways.

- ✓ **BLADE SEPARATION DURING THE RISE.**
All Mecco broaching have an automatic system that is responsible for separating the blade from the workpiece during the ascent phase. This system has managed to substantially extend the life of the tool.

- 1) Downward stroke:**
Cutting is produced during the downward stroke
- 2) Cutter separation:**
When the tool finishes the downward stroke, the workpiece is separated from the tool in order to liberate the tool during the upward stroke
- 3) Upward stroke:**
The cutter rise again without any contact with the piece until keep located over the piece.
- 4) Approaching:**
The workpiece moves until the cutter penetrates the programmed cutting depth





MEC-70x340x600 *BASIC*

Technical data

HUMAN TEAM

The multidisciplinary team consists of qualified and committed professionals. It is certainly a fundamental and indispensable pillar on which our projects are held.

START UP

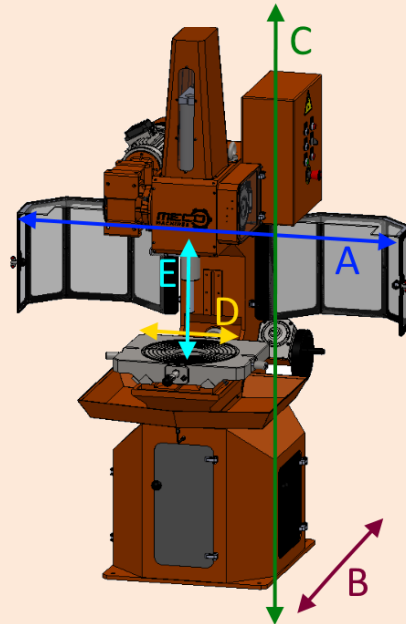
In MECO we like to make life easier for our customers from the start. So we take care of the installation and commissioning of the machine at the site assigned by the client.

TRAINING IN THE CUSTOMER HOME.

In addition to the launch of the machine, each customer receives a training day with which it is intended that the user is familiar with the operation of newly acquired equipment.

WARRANTY

The factory warranty is 1 year for any manufacturing fault or defect to CE standard.



Machine Dimensions

- **A**(Maximum Width with doors open): 1450mm
- **B** (Maximum Depth of the machine): 1040mm
- **C** (Maximum Higher of the machine): 2140mm
- **D** (Maximum diameter of the sample): 600 mm
- **E** (Total working area): 340 mm
- (Machine weight): 960 kg

Electrical Parameters

- Apparent Power: 4062 VA
- Voltage: 400V
- Frequency: 50Hz.
- Connection: III+N+T

Specifications of the Z Axis *(semi-automatic)*

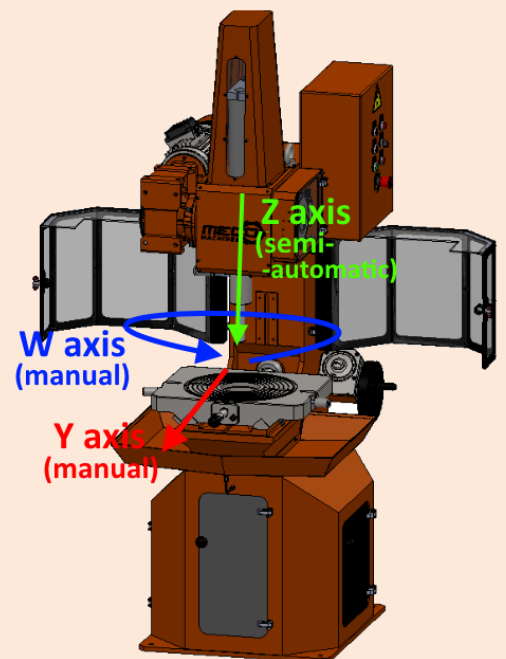
- Maximum Speed Z Axis: 10 m/min
- Total Stroke Z Axis: 377 mm
- Total Engine Power Z axis: 2.2 kW
- Maximum Working Force: 88 kN
- Reduction ratio: 40:1

Specifications of the Y Axis *(manual)*

- Stroke in the Y Axis in +: 45 mm
- Stroke in the Y Axis in -: 33 mm
- Reduction ratio: 30:1
- Minimum Nonius Division: 0,02 mm

Specifications of the W Axis *(manual)*

- Total degrees rotation w: 360°
- Dimensions of rotary plate: Ø 334 mm
- It has a calibrated Nonius and brake for blocked the plate to the desired degree.
- Preset divisions for 2, 3, 4, 5, 6, 7, 8, 10, 12, 14, 16 slots.





MECO-70x340x600 *BASIC*

Versatility and manufacturing capacity

Versatility is undoubtedly the main differentiating factor of MECO broaching regarding our competence as a single machine meets the same production capacity hitherto achieved with two machines, Keyseaters and broaching.

Our broaching machine offer all the features and specifications of the most sophisticated slotting machine of the market. To all this we add the ability to perform internal spline, which until now could only be done with broaching, just without having to spend a fortune on brushes. While brush costs several thousand Euros, the cost of a tool for MECO Keyseater is negligible. But this is not the only competitive advantage over broaching, so are the functional solutions that MECO Slotting offer and you can perform with precision, inner grooved on both straight and tapered blind parts, something impossible for broaching.

Below are some of the pieces that can be done with our broaching.

CUSTOMER CARE

In MECO we have a customer service department that is in charge of solving a professional and friendly manner any needs that may arise to our customers.

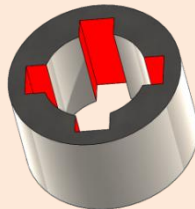
CUSTOMIZED SOLUTIONS

Experience tells us that every customer is different and not all have the same needs. So from MECO we add value to our product as customized solutions.

TECHNICAL ASSISTANCE

If anything the MECO broaching is characterized by high reliability and robustness. However, our technical department is fully segmented and organized to solve in the shortest time, technical contingency that may arise anywhere in the world.

✓ STRAIGHT SLOTS

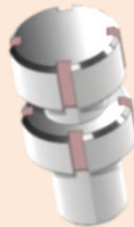


✗ CONICAL KEYWAYS



(ONLY IN PREMIUM AND CNC MODELS)

✗ EXTERNAL SLOTS



(ONLY IN 70&80 PREMIUM AND CNC MODELS)

✓ KEYWAYS IN BLIND SAMPLES.



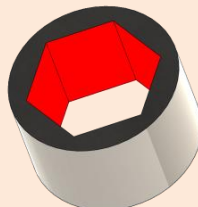
✓ SPECIAL KEYWAYS



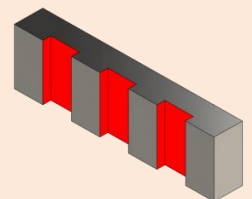
✓ SQUARES



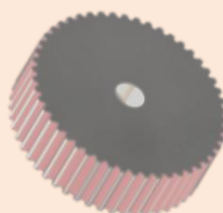
✓ HEXAGONAL



✓ SPECIAL SAMPLES



✗ EXTERNAL SPLINES



(ONLY IN PREMIUM MODELS)

✗ INTERNAL SPLINES AND IN BLIND HOLES



(ONLY IN PREMIUM MODELS)



MEC-70x340x600 BASIC

Equipment, tools and customized solutions

CUTTERS IN STOCK

In MECO always we have a large stock of cutters and standard tools. The cutters will be delivered within 24h in tolerances H7 and P9 for Spain and south Europe. Other tolerances or special cutters 5-6 days. Other destinations on request.

SPECIAL CUTTERS

From the technical office of MECO we will bring solutions and special customized cutters. We are in charge of manufacturing the cutters with the desired customer profile and the required tolerances. We also conduct studies and tests with different materials to optimize and maximize the life of the tool in special applications.

SUPPLIES

In MECO we guarantee our customers the supply of spare parts for the entire life cycle of the machine.

In MECO we are also manufacturers of accessories, tools and tool and spare parts for all our machines. Our delivery times are very small and offer technical and maintenance service anywhere in the world. In addition to a great product, our experience and know-how enables us to offer customized solutions according to the specific needs of each client.

✓ TOOLHOLDERS

They are easily interchangeable thanks to a design with clamping system "Morse taper" and extraction wedge.

PN TYPE



SV TYPE



Special cutters. We handle manufacture special cutters with the desired customer profile and the required tolerances. We also perform tests on pieces of customers to determine the optimum blade material and maximize the life cycle of the same.

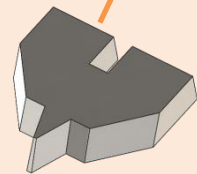
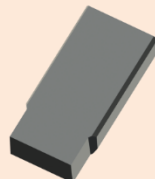
✓ CUTTERS

Our low-cost blades are the only consumable required by MECO Keyseater Machine. They are designed to maximize battery life.

PN TYPE

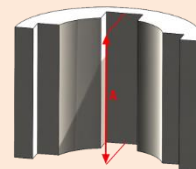


SV TYPE

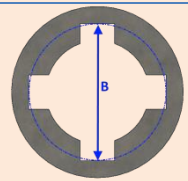


Geometric limits cutters and tool holder standard

	WIDTH AND KIND OF TOOL (mm)	TOOL HOLDER REQUIRED	A (mm)	B (mm)	C (mm)	D (mm)
MEC-70 Basic SV	3 SV	3mm SV	25	81	2,0	11
	4 SV	4mm SV	35	83	2,5	13
	5 SV	5mm SV	45	84	3,1	14
	6 SV	6mm SV	60	91	4,6	20
	8 SV	8mm SV	90	93	4,6	24
	10 SV	10mm SV	120	99	4,6	31
	12 SV	12mm SV	138	102	3,3	36
	14 SV	14mm SV	158	107	4,4	41
	16 FLR SV	From 16mm to 25mm SV	150	114	5,1	50
	18 FLR SV		150	118	7,4	53
20 FLR SV	Large 150mm	150	119	8,3	54	
22 FLR SV		150	118	7,4	54	
25 FLR SV		Large 200mm	150	59	7,4	55
MEC-70 Basic PN	25 PN	From 25mm to 36mm PN	300	76	13,4	88
	28 PN		300	151	13,4	88
	32 PN		300	151	13,4	89
	36 PN	From 34mm to 42mm PN	300	151	13,4	90
	40 PN		300	151	13,4	91
	45 PN	From 40mm to 50mm PN	300	151	13,4	92
50 PN	300		151	13,4	93	

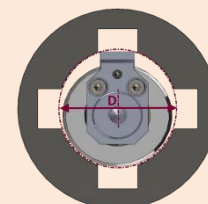
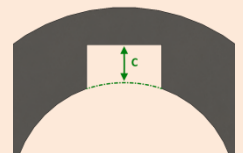


A: Maximum Higher of the Keyway.



B: Reach maximum diameter of the cutter with the sample centered.

C: Maximum Depth of the slot.



D: Minimum diameter of the hole.

* Meco reserves the right to modify the parameters of the preceding table without notice.

* The upper limitations correspond to standard toolholders and cutters. However, Meco can develop specials toolholders and cutters following the customers need.