

THE CUTTING EDGE OF HIGH PERFORMANCE

State-of-the-art flying optics laser cutting machines



RHINO

CUTTING SYSTEMS



Rhino "SPARK" Fiber Laser Cutting Machines

Rhino "SPARK" Fiber Laser is a state-of-the-art flying optic laser cutting machine for the most demanding high production metal fabricators. We are proud to offer this solution to cover a wide range of customer needs. This SPARK can be easily operated by new operators and is well equipped with intelligent features to deliver worry-free, walk-away performance and high productivity. Rhino's built-in cut sheet database and high performance motion control system, will assure unsurpassed cut quality with the highest degree of accuracy every time.

MACHINES:

- FIBER LASER
- PLASMA
- OXY FUEL
- BEVEL
- DRILL
- PIPE
- ROBOTIC

BENEFITS:

- Designed and Manufactured in Canada.
- Robust design for maximum longevity.
- Superior cut quality & high productivity.
- Cut monitoring features facilitate walk-away operation.
- Fast, experienced Local Service.
- Efficient, low cost of ownership.



MAIN FEATURES:

- Advanced, easy to use laser and motion controller.
- Heavy-duty fabricated construction using high-quality mechanical and electrical components.
- Time optimized piercing programs with real time piece-thru detection.
- Plasma detection to maintain highest quality cutting results.
- Cut-loss detection for worry free, walk-away capability.
- Automated cutting head performance to switch materials and sheet thicknesses on the fly.
- Easy to use camera crosshair alignment tool.
- Intuitive HMI with large touch screen interface.
- RSL1515 offers front side drawer loading.
- RSL3015/3520 offers a choice of either rear or side loading pallet changer for quick and easy material changeover.
- Pre-installed material selection database.
- Compliant to rigorous safety standards and certified for operation in North American.
- Fiber laser resonator selection of 500W to 6kW.

**"If you have an application—
we will have the solution."**



RHINO CUTTING SYSTEMS

5316 John Lucas Drive, Burlington, Ontario, L7L 6A6 Canada Phone: 289 245 1020 Fax: 289 245 1021

www.rhinocuttingsystems.com

info@rhinocuttingsystems.com

Built **RHINO** Tough...

THE CUTTING EDGE OF HIGH PERFORMANCE

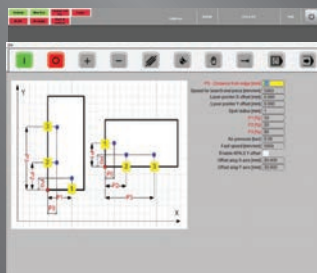
State-of-the-art flying optics laser cutting machines



Smooth Cutting



Intuitive HMI



Automatic Sheet Adj.

Rhino "SPARK" Fiber Laser Cutting Machines

SUBJECT		FEATURES				
Machine Model		RSL1515 / RSL3015 / RSL3520				
Type		Flying Optic Fiber Laser				
Cutting Head Features		Auto Focus - Pierce, Cut-loss and Plasma monitoring. Camera alignment.				
Sheet Dimensions		5'x5' (1.5x1.5M) / 5'x10'(1.5x3.0M) / 6'x12'(2.0x3.5M) /Custom				
Resonator (IPG)		1 kW	2 kW	3 kW	4 kW	6 kW
Laser Fiber Diameter		50 / 100 / 150 / 200 μm				
Maximum Cutting Capacity	Mild steel	.315" / 8 mm	.591" / 15 mm	.708-.787" / 18-20 mm	.787-.984" / 20-25mm	.98" / 25 mm
	Stainless steel	.157" / 4 mm	.236" / 6 mm	.394" / 10 mm	.47" / 12 mm	.78" / 20 mm
	Aluminum	.118" / 3 mm	.315" / 8 mm	.315" / 8 mm	.393" / 10mm	.59" / 15 mm
	Brass	.079" / 2 mm	.118" / 3 mm	.197" / 5 mm	.236" / 6 mm	.394" / 10 mm
	Copper	.079" / 2 mm	.118" / 3 mm	.197" / 5 mm	.236" / 6 mm	.394" / 10 mm
Laser Power Supply Rating 460VAC / 3PH		7.5 kW	7.5 kW	15 kW	15 kW	22.5kW
Working Table Height		30" / 750 mm				
Maximum Load Capacity		3,000 lb / 1,590 kg				
Positioning System		Helical Rack and Pinion				
Acceleration (g)		0.8		1.2		
Axis Speed (X,Y Traverse Speed)		2,000 IPM (51m/min)			4,800 IPM (122m/min)	
Positioning Accuracy		± .003" (.08mm)				
Repeatability		± .001" / .02 mm				
Z Axis Distance Control		Integrated Capacitive				
Illumination		LED				
Control		Large Touch Screen HMI & Pendant				
Cutting Assist Gas		Nitrogen, Oxygen Proportional Pressure Control 0-100psi, 0-250psi, 0-500psi				
Machine Weight, less Laser/Chiller		10,000lbs / 4,545kg (not incl. shuttle)				



RHINO CUTTING SYSTEMS

5316 John Lucas Drive, Burlington, Ontario, L7L 6A6 Canada Phone: 289 245 1020 Fax: 289 245 1021

www.rhinocuttingsystems.com

info@rhinocuttingsystems.com

Built **RHINO** Tough...